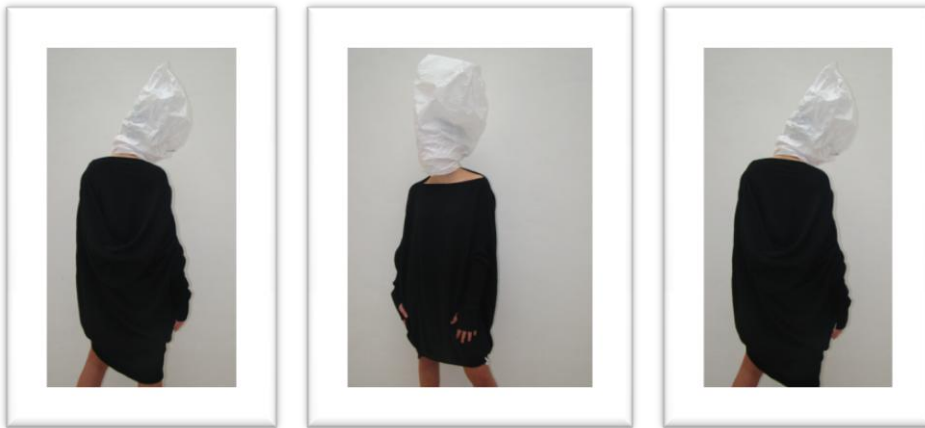


## GATTACICOVA F/W 2010-2011

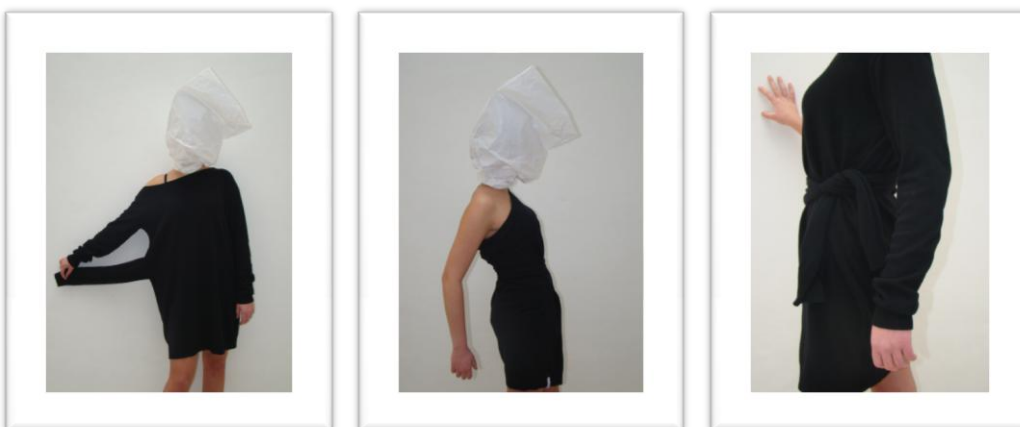
ART-1 : a dress with an asymmetrical style whose shape is that of an egg with sleeves in bland cashmere. Single size.

Umpteenth declination of the dress this time with sleeves on wool that are similar to the neck and the end of the dress. The asymmetry of the details of the sleeves allows the uniqueness of the size.



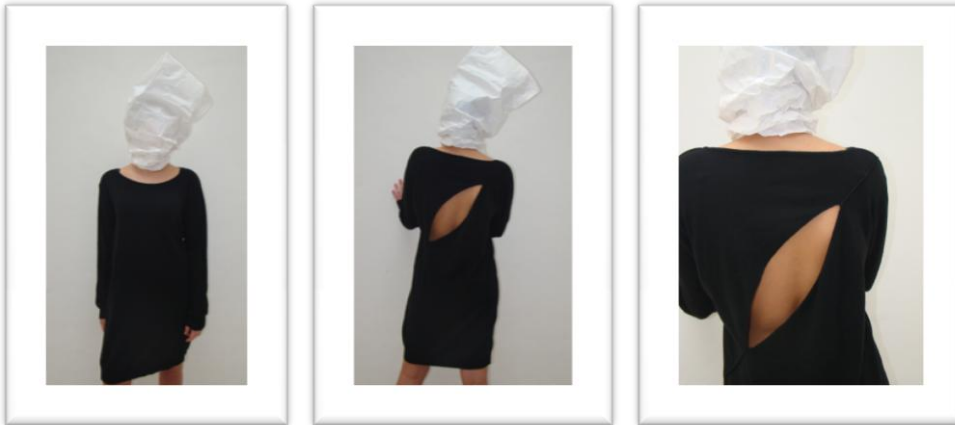
ART-2 : dress with three bland cashmere sleeves. Two sizes.

A third closed sleeve is put on to the shift. If you put in a way the sleeve in the dress, it becomes a pocket, otherwise thanks to the big nek it's possible to pull out the left arm and cross the sleeves around the waistline creating a tight dress made up of one sleeve.



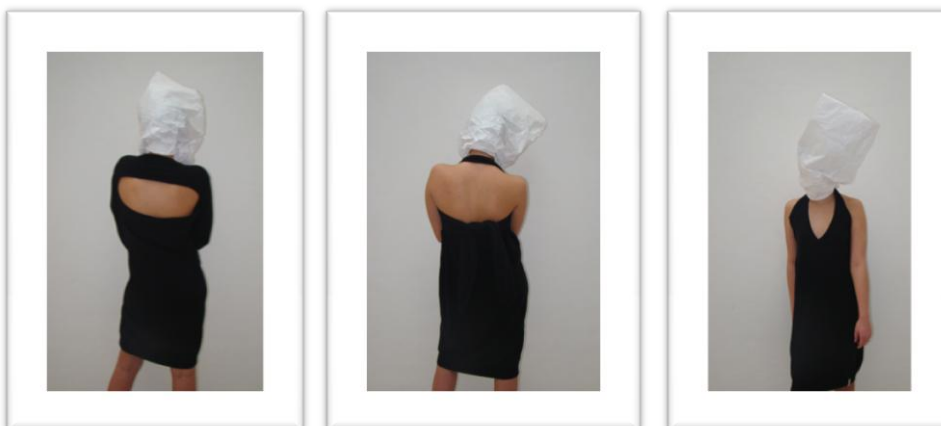
ART-3 : bland cashmere shift with a diagonal cut. Two sizes.

The dress, inspired to Fontana's paintings, is simple with a detail at the back that can be seen through that "tear".



ART-4 : bland cashmere shift with an opening at the back. Two sizes.

Maxi V-necked pullover, thanks to the opening at the back it allows the arms to come out from the dress becoming an elegant dress.



ART- 5 : trench coat, whose shape is that of an egg, with sweatshirt. One size.

The warm sweatshirt links with this waterproof material whose visual effect is that of a stroke paper. A dress for the rain.



ART-6 : a bland cashmere dress resembling a bat. Two sizes.

Kimono sleeves dress and long neck.



ART-7: bland cashmere asymmetrical dress. Two sizes.

The dress seems to be divided into two parts: one is linear and simple, close-fitting to the body; the other one has a large sleeve, and it's 5 cm longer.



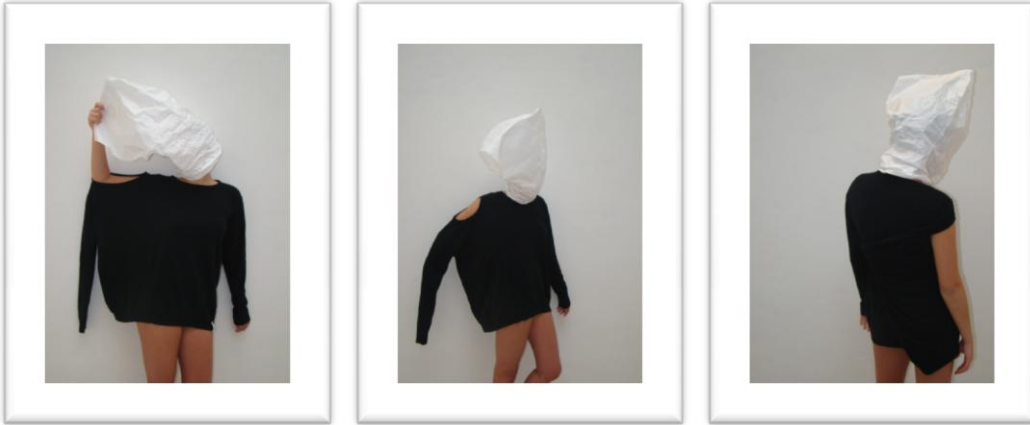
ART-8 : bland cashmere sack dress. Two sizes.

The dress as a rectangular shape as that one of a sack and has the opening of the head 10 cm under the perimeter of the dress. The stitches are visible and in contrast.



ART-9 : Bland cashmere double t-shirt. Two sizes.

This article comes from the fusion between two pullovers which generate, when you wear it, an augmentation of the volume and a funny asymmetry.



ART-10 : dress with 4 bland cashmere sleeves. Two sizes.

The dress is made up of a shift with two short sleeves and two long which act as a belt.



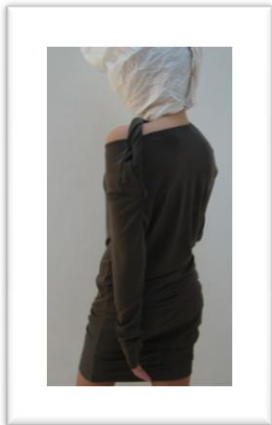
ART-11 : bland cashmere cardigan with 4 sleeves. Two sizes.

Mirror declination, the article shows a maxi cardigan fitted around the body. The result is created by the two sleeves at the bottom which act as a belt.



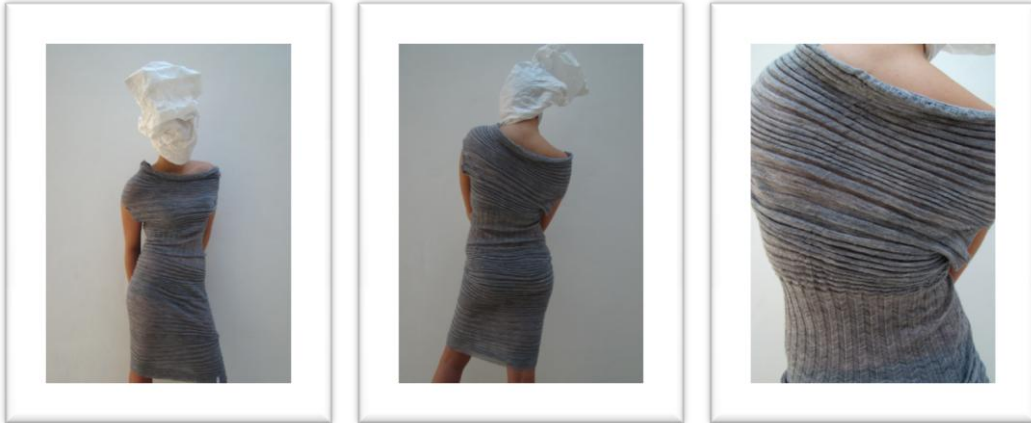
ART-12: asymmetric dress in warm jersey. Three sizes.

The dress has different volumes needleworked. They create pleats and pleatings. A woven plait at the neck, decorates the bare shoulder marking its profile



ART-13: woollen shift. Single size.

The simplicity of the dress creates a contrast with the peculiarity of its manufacturing. The article doesn't have any seam except those of the sleeves and it is largely extensible



ART-14: large angora dress. Single size.

The dress has the shape of a maxi pullover and it's very loose-fitting. If extended on a surface, it draws an "H", but when you put it on it's really a softness cloud



ART-15: dress made up of wool and angora. Single size.

The dress has a woollen shaved pipe and another angora pipe with a particular poke manufacturing. This one is a train that becomes a gilet that can be worn both at the front and at the back.



ART-16: angora dress whose shape is again that of an egg. Single size.

The dress is a one-pipe with two different productions: one shaved and the other poked. It can be modelled on the body without seams exchanging the two parts: the neck becomes the skirt and vice versa



ART-17 : this wool cardigan has 4 sleeves. One size.

The maxi cardigan comes from a cut tube. you can put both in a way or another.



ART-18 : angora dress with special processing. One size.

The dress looks like a long tube, seamless. the wide neck changes the look of the dress.



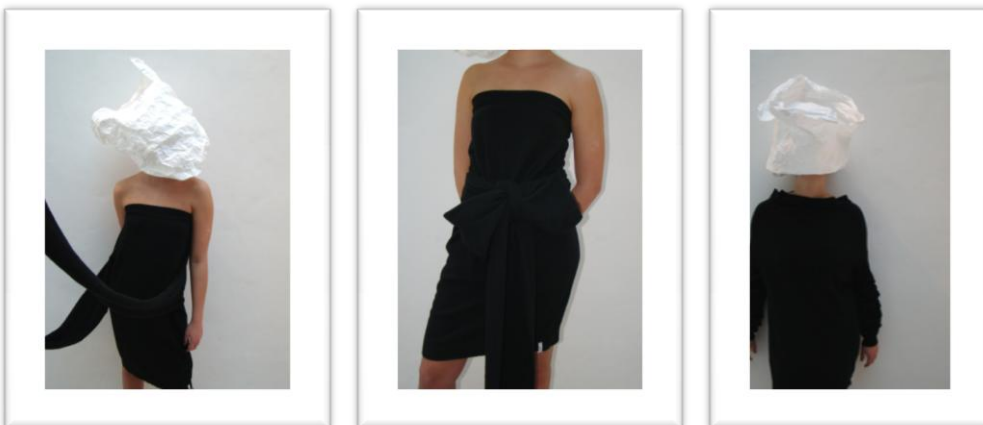
ART-19 : bland cashmere tight with 4 sleeves. Two size

The sleeves of this particular sweater becomes a belt.



ART-20 : tube bland cashmere with long sleeves. Two size

The sleeves measure 1.50 m. Can be used as a belt or can be worn, so the habit becomes pullover.



ART-21 : bland cashmere cardigan. Two size.

This article is the overlap of a cardigan and a scarf. Has a single botton.

